

**Immanuel Lutheran Church
Executive Committee Meeting Minutes
September 3, 2013
6 p.m., ILC Library**

Attendees: John Urbanski, Susan Geitzenauer, Pastor Paul Nelson, Pastor Susan Weaver, Bob Warner, and Karen Travis

Absent: Brian Nichols

John called the meeting to order at 6:03 p.m.

Devotion provided by Pastor Susan Weaver

Motions:

Motion Made	Made by	Second	Outcome of Vote
Motioned to approve minutes from August.	John U.	Bob W.	Motion carried

Action Items Assigned:

Action items	Assigned	Target Date	Status

New and Other Business:

- Gary Thrasher is doing well. He will be out until the end of September and may begin to transition back to work in October. Nicki and MaryBeth are handling his responsibilities in his absence. Salary changes for Nicki won't change until September 1. For MaryBeth, changes will take effect retroactively (from the date Gary left for his leave of absence).
- Same sex marriage/discussion/training: Concluded there will be three sessions, three different weeks/times. Will ask Council members to be facilitators and note takers. Have reserved Fellowship Hall for the discussion dates. Agreed that a training session needed to prepare people to facilitate conversations. Will discuss what's needed for this training session and when it should be held at the Council meeting next week. A suggestion was made to open training to faith group representatives, as well.

Reports:

Secretary's Report – Karen Travis

- Pastor Paul is handling Todd Monge's gift, not Martin. Correction will be noted.
- John U. motioned to approve August meeting minutes, as amended. Bob W. seconded. Motion carried.

Financial Secretary's Report – Bob Warner

- No report.

Treasurer's Report – Brian Nichols

- No report.

Vice President's Report – Susan Geitzenauer

- No report.

President's Report – John Urbanski

- Discussed the need to “officially” approve housing allowances in order for them to qualify for tax exemption for each tax year. When budget is approved each year, there is a line item for Housing Allowance included (Pastor Paul to confirm), and the budget is officially approved at the Annual Meeting.
- Portico Benefit Services discussion, changing health benefit options for 2014. Each church can choose which plan to offer staff. The ELCA is recommending the “Gold” plan, which most closely matches current coverage. For Immanuel, going with the Gold plan would be roughly cost neutral, and would include some changes to plan design (e.g., 20% coinsurance rather than 15%). Susan G. will work with Bill and Portico to coordinate assessment and selection of a plan. Have until early October to make a decision. John will add this to October's agenda.
- Still waiting for information on a bid of cost estimates for roof repair.

Pastor updates:

Pastor Paul

- New banners are here for the tent meeting. Tent comes Thursday.
- Stewardship message this fall will focus on “What does it mean to give in a way that changes who I am?”
- Stressed the importance of getting people to sign up for Simply Giving.
- Have three speakers for Welcome Weekend, who will each share a short faith testimony. Each will use a picture to help share their faith story, and people will be invited to pick a picture that speaks to faith.
- Update on Redeemer, letter of intent.

Pastor Susan

- Went through Social Ministry budget and history with Kim Rathjen and she's well prepared to move things forward. Right now she's focused on faith groups, with Welcome Weekend coming. Will aim for September 22 for an installation of Kim in her new position. Pastor Paul will follow up with her on that.
- Need to bid farewell to Randy, perhaps the same day as Kim's installation.
- Pastor Susan will be on vacation October 1.

Upcoming meetings

Council: September 10 at 7 p.m.

Executive Committee: October 1 at 6 p.m.

Meeting adjourned at 7:20 p.m.

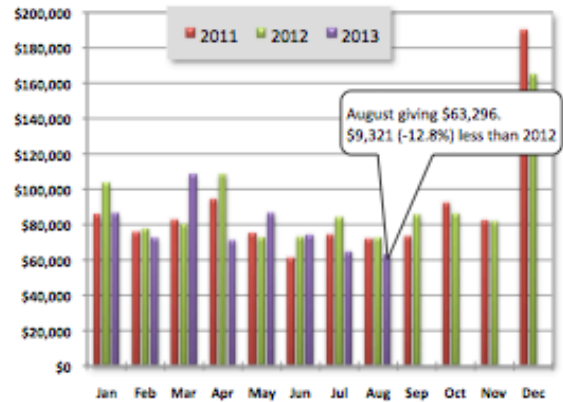
Prayerfully submitted,

Karen Travis
Church Council Secretary

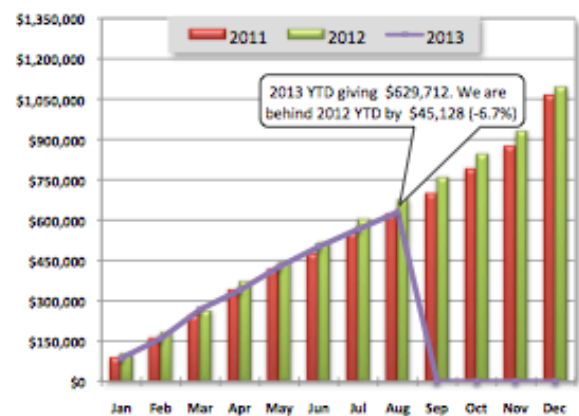
Income Report

Immanuel Lutheran Church Income Report for August 2013

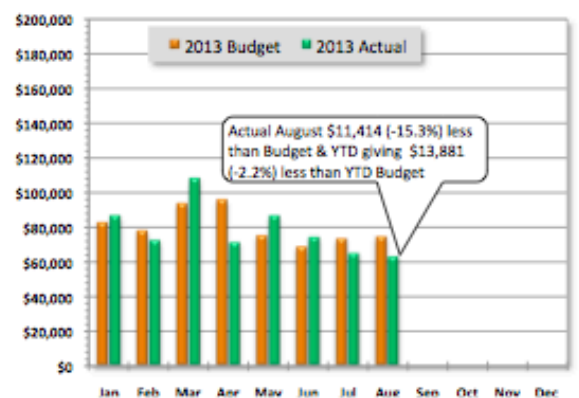
Monthly Giving						
Month	2010	2011	2012	2013	Var \$	Var %
January	81,681	86,230	103,744	87,046	(16,698)	-16.1%
February	81,946	76,078	78,018	72,714	(5,304)	-6.8%
March	76,533	83,025	80,694	108,598	27,904	34.6%
April	82,488	94,959	108,798	71,449	(37,349)	-34.3%
May	84,582	75,593	73,058	86,953	13,895	19.0%
June	65,110	61,527	73,349	74,499	1,150	1.6%
July	69,531	74,684	84,562	65,157	(19,405)	-22.9%
August	82,890	72,215	72,617	63,296	(9,321)	-12.8%
September	73,435	73,812	85,876	0		
October	103,989	92,878	86,578	0		
November	80,006	82,900	82,074	0		
December	173,149	190,460	165,267	0		
YTD	1,064,363	1,094,635	1,172,653	629,712	(45,128)	-6.7%



Cumulative Giving by Month						
Month	2010	2011	2012	2013	Var \$	Var %
January	81,681	86,230	103,744	87,046	(16,698)	-16.1%
February	163,627	162,308	181,762	159,760	(22,002)	-12.1%
March	240,160	245,333	262,456	268,358	5,902	2.2%
April	322,648	340,293	371,254	339,807	(31,447)	-8.5%
May	407,230	415,885	444,312	426,760	(17,552)	-4.0%
June	472,340	477,412	517,661	501,259	(16,402)	-3.2%
July	541,871	552,096	602,223	566,416	(35,807)	-5.9%
August	624,761	624,312	674,840	629,712	(45,128)	-6.7%
September	698,196	698,124	760,716			
October	802,185	791,002	847,294			
November	882,191	873,903	929,368			
December	1,055,340	1,064,363	1,094,635			



2013 Monthly Budget vs. Actual						
Month	Budget	Actual	Mo Var	Mo %	YTD Var	YTD %
January	82,849	87,046	4,197	5.1%	4,197	5.1%
February	78,150	72,714	(5,436)	-7.0%	(1,239)	-0.8%
March	93,889	108,598	14,709	15.7%	13,470	5.3%
April	96,155	71,449	(24,706)	-25.7%	(11,236)	-3.2%
May	75,358	86,953	11,595	15.4%	359	0.1%
June	68,915	74,499	5,584	8.1%	5,943	1.2%
July	73,567	65,157	(8,410)	-11.4%	(2,467)	-0.4%
August	74,710	63,296	(11,414)	-15.3%	(13,881)	-2.2%
September						
October						
November						
December						
Annual	1,093,002	629,712	-- NA --	-- NA --	(463,290)	57.6%



Income Summary

2013 August Analysis Summary

August 2013 giving was less than August 2012 and less than August 2013 budget.

- Actual giving 2013 vs. 2012:
 - August giving: \$9,321 (-12.8%) less than 2012 (\$63,296 vs. \$72,617)
 - YTD giving: \$45,128 (-6.7%) less than 2012 (\$629,712 vs. \$674,840)
- Actual giving vs. budget:
 - August: \$11,414 (-15.3%) less than budget (\$63,296 vs. \$74,710)
 - YTD: \$13,881 (-2.2%) less than budget (\$629,712 vs. \$643,593)
- Attendance: Sundays in August 2013: 4 2012: 4

Immanuel Attendance: 2012 vs. 2013

Date	2011	2012	2013	2013 Cum	Variance	Cum Variance			
January	3,054	2,784	2,139	2,139	(645)	(645)			
February	2,300	3,146	3,309	5,448	163	(482)			
March	3,793	3,553	5,149	10,597	1,596	1,114			
April	4,616	4,415	2,210	12,807	(2,205)	(1,091)			
May	2,417	1,948	2,106	14,913	158	(933)			
June	1,595	1,724	1,575	16,488	(149)	(1,082)			
July	1,772	1,782	1,435	17,923	(347)	(1,429)			
August	1,493	1,544	1,469	19,392	(75)	(1,504)			
September	2,495	2,957		19,392	(2,957)	(4,461)			
October	3,483	2,670		19,392	(2,670)	(7,131)			
November	3,343	3,111		19,392	(3,111)	(10,242)			
December	4,208	5,000		19,392	(5,000)	(15,242)			
YTD Avg	2,881	2,886	2,424						
YTD Total	34,569	34,634	19,392						

Immanuel Lutheran 3 Year Attendance Comparison

