

**Immanuel Lutheran Church
Executive Committee Meeting Minutes
October 1, 2013
6 p.m., ILC Library**

Attendees: John Urbanski, Susan Geitzenauer, Pastor Paul Nelson, Brian Nichols and Bob Warner

Absent: Pastor Susan Weaver and Karen Travis

John called the meeting to order at 6:02 p.m.

Devotion provided by Brian Nichols

Motions:

Motions Made	Made by	Second	Outcome of Vote
Motion to approve minutes from September	Bob	Brian	Motion carried
Motion to recommend Gold+ Portico benefit option to Council for approval	Susan	Bob	Motion carried

Action Items Assigned:

Action Items	Assigned	Target Date	Status

Old Business:

- **Todd Monge Gift:** Pastor Paul will follow-up with Travis re the gift certificate for Todd. He will also talk to Todd about publicly recognizing/thanking him during a worship service.
- **Same sex marriage/discussion/training:** Council training will be held the evening of October 15 at Pastor Paul's house. Per Pastor Paul, the focus of training will be: (i) talking about what this is about and defining the issue; (ii) looking at Scripture to understand and recognize that differing views have Biblical basis; and (iii) allowing people to share their stories. Discussion was had regarding conversations that Executive Committee members have had with members to date. Pastor Paul also asked that we continue to lift this issue up in prayer so that we handle it well, faithfully and gracefully.
- **Portico Benefits Recommendation:** Susan G shared results from her review and study of the various Portico coverage options and moved that it be further recommended to the Council that Immanuel elect the Gold+ coverage; Bob seconded; motion carried. Gold+ is the coverage option recommended by the ELCA and is the most similar to the coverage provided in 2013. The cost differential estimates appear to be within +/- \$500 per month, but Susan will follow-up with Bill before next week's Council meeting to see if tighter estimates can be provided. Additional discussion was had about Immanuel's general benefit provisions and policies and it was agreed that Susan would follow up with Bill and report back to the Executive Committee for further discussion.

New and Other Business:

- **Thrivent Choice Double Direction Church Campaign:** Thrivent has launched a new campaign, which will run from Oct. 1 through Nov. 30 and will double all "Choice Dollar" directions made by Thrivent members to their enrolled churches, up to a total of \$15 million. Pastor Paul will liaise with Bill about whether there is a database of all Immanuel/Thrivent members and if so, will email/communicate with them directly. If not, Pastor Paul will send an email to all Immanuel members advising them of this giving opportunity.

Reports:

Secretary's Report – Karen Travis

- No report (absent).

Financial Secretary's Report – Bob Warner

- No report.

Treasurer's Report – Brian Nichols

- No report.

Vice President's Report – Susan Geitzenauer

- No report.

President's Report – John Urbanski

- No report.

Pastor updates:

Pastor Paul

- **Wednesday Nights:** Speakers/events have been incredible and well attended.
- **Welcome Weekend:** "Fantastic" and very moving faith stories; another member will share his/her faith story the second Sunday in October.
- **Staff Retreat:** Will be held October 27-28 at Edenvale and Pastor Paul invited any Executive Committee members to attend. John suggested that perhaps our next Council retreat could be held at Redeemer.
- **In-Reach and Out-Reach:** Kim's transition into her new position has gone well and she has been very focused on organizing and encouraging faith group development.
- **Dissertation:** Pastor Paul's dissertation proposal (51 pages) was submitted yesterday. He will meet with Pastor Kelly at Redeemer about starting a men's group there; three groups are already being set up at Immanuel. Pastor Paul thanked Immanuel for being so supportive and noted that this process has been beneficial to him not just personally, but to Immanuel, as well, in connection with the capital campaign, vision statement, etc.
- **Gary Thrasher:** Gary attended the concert at Immanuel on Sunday and will try to be here Wednesday night and slowly re-engage. Gary is excited and grateful and "ready to get back at it."

Pastor Susan

- No Update (absent)

Upcoming meetings:

Council: October 8 at 7 p.m.

Executive Committee: November 5 at 6 p.m.

Meeting adjourned at 7:03 p.m.

Prayerfully submitted,

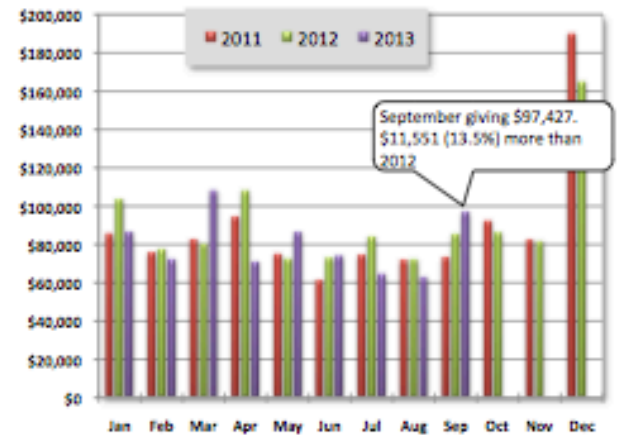
Susan Geitzenauer

Vice President / acting on behalf of Karen Travis, Church Council Secretary

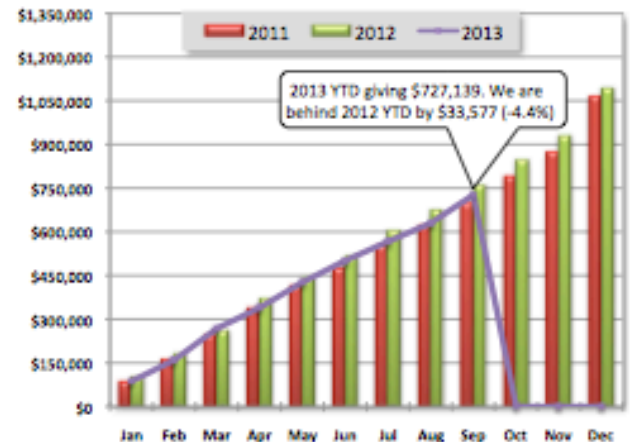
Income Report

Immanuel Lutheran Church Income Report for September 2013

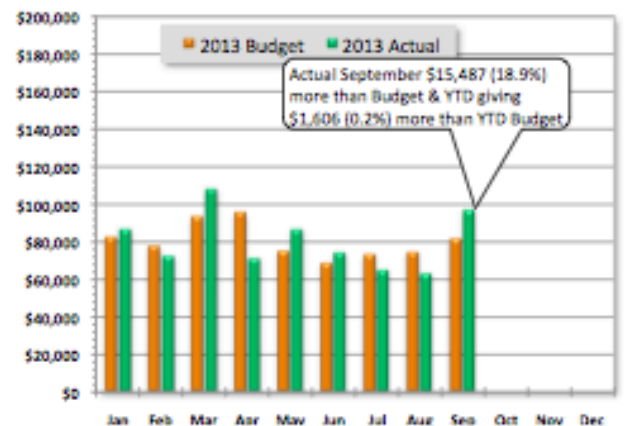
Monthly Giving						
Month	2010	2011	2012	2013	Var \$	Var %
January	81,681	86,230	103,744	87,046	(16,698)	-16.1%
February	81,946	76,078	78,018	72,714	(5,304)	-6.8%
March	76,533	83,025	80,694	108,598	27,904	34.6%
April	82,488	94,959	108,798	71,449	(37,349)	-34.3%
May	84,582	75,593	73,058	86,953	13,895	19.0%
June	65,110	61,527	73,349	74,499	1,150	1.6%
July	69,531	74,684	84,562	65,157	(19,405)	-22.9%
August	82,890	72,215	72,617	63,296	(9,321)	-12.8%
September	73,435	73,812	85,876	97,427	11,551	13.5%
October	103,989	92,878	86,578	0		
November	80,006	82,900	82,074	0		
December	173,149	190,460	165,267	0		
YTD	1,064,363	1,094,635	1,172,653	727,139	(33,577)	-4.4%



Cumulative Giving by Month						
Month	2010	2011	2012	2013	Var \$	Var %
January	81,681	86,230	103,744	87,046	(16,698)	-16.1%
February	163,627	162,308	181,762	159,760	(22,002)	-12.1%
March	240,160	245,333	262,456	268,358	5,902	2.2%
April	322,648	340,293	371,254	339,807	(31,447)	-8.5%
May	407,230	415,885	444,312	426,760	(17,552)	-4.0%
June	472,340	477,412	517,661	501,259	(16,402)	-3.2%
July	541,871	552,096	602,223	566,416	(35,807)	-5.9%
August	624,761	624,312	674,840	629,712	(45,128)	-6.7%
September	698,196	698,124	760,716	727,139	(33,577)	-4.4%
October	802,185	791,002	847,294			
November	882,191	873,903	929,368			
December	1,055,340	1,064,363	1,094,635			



2013 Monthly Budget vs. Actual						
Month	Budget	Actual	Mo Var	Mo %	YTD Var	YTD %
January	82,849	87,046	4,197	5.1%	4,197	5.1%
February	78,150	72,714	(5,436)	-7.0%	(1,239)	-0.8%
March	93,889	108,598	14,709	15.7%	13,470	5.3%
April	96,155	71,449	(24,706)	-25.7%	(11,236)	-3.2%
May	75,358	86,953	11,595	15.4%	359	0.1%
June	68,915	74,499	5,584	8.1%	5,943	1.2%
July	73,567	65,157	(8,410)	-11.4%	(2,467)	-0.4%
August	74,710	63,296	(11,414)	-15.3%	(13,881)	-2.2%
September	81,940	97,427	15,487	18.9%	1,606	0.2%
October						
November						
December						
Annual	1,093,002	727,139	-NA-	-NA-	(365,863)	66.5%



Financial Summary

2013 September Analysis Summary

September 2013 giving was more than September 2012 and more than September 2013 budget.

- Actual giving 2013 vs. 2012:
 - September giving: \$11,551 (13.5%) more than 2012 (\$97,427 vs. \$85,876)
 - YTD giving: \$33,577 (-4.4%) less than 2012 (\$727,139 vs. \$760,716)
- Actual giving vs. budget:
 - September: \$15,487 (18.9%) more than budget (\$97,427 vs. \$81,940)
 - YTD: \$1,606 (0.2%) more than budget (\$727,139 vs. \$725,533)
- Attendance: Sundays in September 2013: 5 2012: 5

Immanuel Attendance: 2012 vs. 2013

Date	2011	2012	2013	2013 Cum	Variance	Cum Variance				
January	3,054	2,784	2,139	2,139	(645)	(645)				
February	2,300	3,146	3,309	5,448	163	(482)				
March	3,793	3,553	5,149	10,597	1,596	1,114				
April	4,616	4,415	2,210	12,807	(2,205)	(1,091)				
May	2,417	1,948	2,106	14,913	158	(933)				
June	1,595	1,724	1,575	16,488	(149)	(1,082)				
July	1,772	1,782	1,435	17,923	(347)	(1,429)				
August	1,493	1,544	1,469	19,392	(75)	(1,504)				
September	2,495	2,957	2,516	21,908	(441)	(1,945)				
October	3,483	2,670		21,908	(2,670)	(4,615)				
November	3,343	3,111		21,908	(3,111)	(7,726)				
December	4,208	5,000		21,908	(5,000)	(12,726)				
YTD Avg	2,881	2,886	2,434							
YTD Total	34,569	34,634	21,908							

Immanuel Lutheran 3 Year Attendance Comparison

