

**Immanuel Lutheran Church
Executive Committee Meeting Minutes
June 4, 2013
6 p.m., ILC Library**

Attendees: John Urbanski, Susan Geitzenauer, Pastor Paul Nelson, and Karen Travis

Absent: Brian Nichols, Pastor Susan Weaver, and Bob Warner

John called the meeting to order at 6 p.m.

Devotion provided by Pastor Paul Nelson

Motions:

Motion Made	Made by	Second	Outcome of Vote
Motioned to approve minutes from May.	John U.	Susan G.	Motion carried

Action Items Assigned:

Action items	Assigned	Target Date	Status

New and Other Business:

- John will provide input on the Employee Guidebook to Karen, who will provide a revised version for review by staff.
- MaryKay will modify record-keeping practices to help Bill reconcile online transactions.
- Discussed ELCA communication to congregations regarding same sex marriages. The ELCA does not have a position on this. Discussed the pros and cons of being open to performing same sex marriages in the church. We currently marry those who are not members of the church, with some restrictions based on church policy (e.g., members vs. non-members). Will plan to have a thoughtful conversation on this topic with Council members at the next meeting, and will explore opportunities for members of the congregation to get together to express hopes, concerns, or fears regarding this issue. John will distribute a copy of the ELCA communication to Council members prior to our meeting next week.
- Discussed leaky roof issues. A suggestion has been made to repair/maintain the roof and repair gutters to redirect the water, and bids will be collected next week. There is money available to help fund repairs if needed.

Reports:

Secretary's Report – Karen Travis

- John U. motioned to approve May meeting minutes. Susan G. seconded. Motion carried.

Financial Secretary's Report – Bob Warner (reported by John)

- Attendance was good in May.
- We were \$12,000 over budget for the month.
- MaryKay will modify record-keeping practices to help Bill reconcile online transactions.

Treasurer's Report – Brian Nichols

- No report.

Vice President's Report – Susan Geitzenauer

- No report.

President's Report – John Urbanski

- Martin requested we consider offering the new logo designer (Todd) a gift in appreciation for his work on Immanuel's new logo design. Could come out of the pastor's expense account. John U. motioned to offer Todd a gift certificate to the Ivy Hotel (similar to what we did for the Geek Squad). Karen seconded. Motion carried.

Pastor updates:

Pastor Paul

- Pastor Paul provided an update on Visioning, and handed out materials on what we do as individuals—e.g., preparing a 60-second elevator speech that describes our congregation to our guests. A copy of these materials will be shared with the Council, and encourage them to pick items from the list to work on to move forward, faster, missionally.

Pastor Susan

- On sabbatical until July 15

Upcoming meetings

Council: June 11 at 7 p.m.

Executive Committee: August 6 at 6 p.m.

Council: August 13 at 7 p.m.

Meeting adjourned at 7:20 p.m.

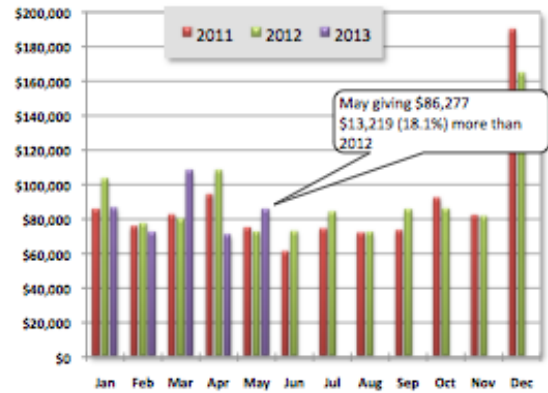
Prayerfully submitted,

Karen Travis
Church Council Secretary

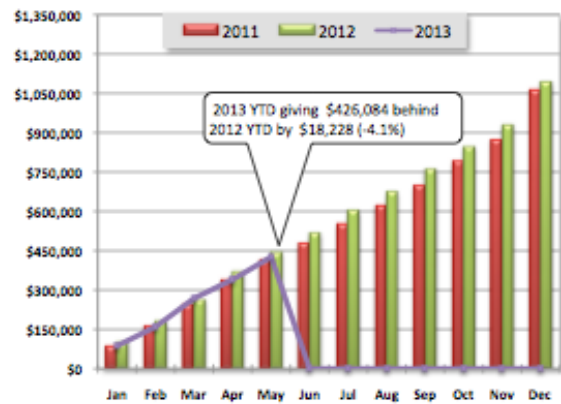
Income Report

Immanuel Lutheran Church Income Report for May 2013

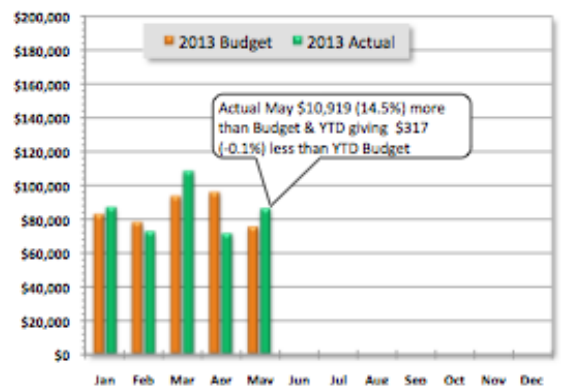
Monthly Giving						
Month	2010	2011	2012	2013	Var \$	Var %
January	81,681	86,230	103,744	87,046	(16,698)	-16.1%
February	81,946	76,078	78,018	72,714	(5,304)	-6.8%
March	76,533	83,025	80,694	108,598	27,904	34.6%
April	82,488	94,959	108,798	71,449	(37,349)	-34.3%
May	84,582	75,593	73,058	86,277	13,219	18.1%
June	65,110	61,527	73,349	0		
July	69,531	74,684	84,562	0		
August	82,890	72,215	72,617	0		
September	73,435	73,812	85,876	0		
October	103,989	92,878	86,578	0		
November	80,006	82,900	82,074	0		
December	173,149	190,460	165,267	0		
YTD	1,064,363	1,094,635	426,084	426,084	(18,228)	-4.1%



Cumulative Giving by Month						
Month	2010	2011	2012	2013	Var \$	Var %
January	81,681	86,230	103,744	87,046	(16,698)	-16.1%
February	163,627	162,308	181,762	159,760	(22,002)	-12.1%
March	240,160	245,333	262,456	268,358	5,902	2.2%
April	322,648	340,293	371,254	339,807	(31,447)	-8.5%
May	407,230	415,885	444,312	426,084	(18,228)	-4.1%
June	472,340	477,412	517,661			
July	541,871	552,096	602,223			
August	624,761	624,312	674,840			
September	698,196	698,124	760,716			
October	802,185	791,002	847,294			
November	882,191	873,903	929,368			
December	1,055,340	1,064,363	1,094,635			



2013 Monthly Budget vs. Actual						
Month	Budget	Actual	Mo Var	Mo %	YTD Var	YTD %
January	82,849	87,046	4,197	5.1%	4,197	5.1%
February	78,150	72,714	(5,436)	-7.0%	(1,239)	-0.8%
March	93,889	108,598	14,709	15.7%	13,470	5.3%
April	96,155	71,449	(24,706)	-25.7%	(11,236)	-3.2%
May	75,358	86,277	10,919	14.5%	(317)	-0.1%
June						
July						
August						
September						
October						
November						
December						
Annual	1,093,002	426,084	-- NA --	-- NA --	(666,918)	39.0%



Income Summary

2013 May Analysis Summary

May 2013 giving was more than May 2012 and more than May 2013 budget.

- Actual giving 2013 vs. 2012:
 - May giving: \$13,219 (18.1%) more than 2012 (\$86,277 vs. \$73,058)
 - YTD giving: \$18,228 (4.1%) less than 2012 (\$426,084 vs. \$444,312)
- Actual giving vs. budget:
 - May: \$10,919 (14.5%) more than budget (\$86,277 vs. \$75,358)
 - YTD: \$317 (0.1%) less than budget (\$426,084 vs. 426,401)
- Attendance: Sundays in May 2013: 4 2012: 4

Immanuel Attendance: 2012 vs. 2013

Date	2011	2012	2013	2013 Cum	Variance	Cum Variance
January	3,054	2,784	2,139	2,139	(645)	(645)
February	2,300	3,146	3,309	5,448	163	(482)
March	3,793	3,553	5,149	10,597	1,596	1,114
April	4,616	4,415	2,210	12,807	(2,205)	(1,091)
May	2,417	1,948	2,106	14,913	158	(933)
June	1,595	1,724		14,913	(1,724)	(2,657)
July	1,772	1,782		14,913	(1,782)	(4,439)
August	1,493	1,544		14,913	(1,544)	(5,983)
September	2,495	2,957		14,913	(2,957)	(8,940)
October	3,483	2,670		14,913	(2,670)	(11,610)
November	3,343	3,111		14,913	(3,111)	(14,721)
December	4,208	5,000		14,913	(5,000)	(19,721)
YTD Avg	2,881	2,886	2,983			
YTD Total	34,569	34,634	14,913			

Immanuel Lutheran 3 Year Attendance Comparison

