

**Immanuel Lutheran Church  
Church Council Meeting Minutes  
November 12, 2013  
7 p.m., ILC Library**

**John Urbanski** called the meeting to order at 7:03 p.m.

Devotions – Susan Geitzenauer

Faith Story – Kirsten Stenoien

Refreshments – Sharon Peterson

**Motions:**

Motion Made	Made By	Second	Outcome of Vote
Motion to approve October minutes.	Sharon	Janice	Motion carried.
Motion to contribute \$482 of Council directed benevolence funds to Lutheran Disaster Relief	John	Lorraine	Motion carried.

**Action Items Assigned:**

Action items	Assigned to	Target Date	Status

**Committee Reports:**

**Secretary's Report – Susan Geitzenauer for Karen Travis**

- Sharon motioned to approve October minutes; Janice seconded; motion carried

**Vice President's Report – Susan Geitzenauer**

- Portico enrollment has started; a few staff members have enrolled; a few questions, but no issues reported to date

**Financial Secretary's Report – Bob Warner**

- Second month we've carried a surplus
- Oct 2013 giving almost 13% more than Oct 2012; YTD a bit behind, but .3% more than budget
- October 2013 attendance was slightly lower than last year. January - October 2013 attendance is nearly 2,000 less than January – October 2012

**Treasurer's Report – Brian Nichols**

- October giving was \$1,000 over budget and YTD giving is more than \$2,600 over budget
- Church expenses were 10% over budget in October, but are less than 2% over budget YTD
- Program expenses were almost 50% under budget in October
- Need \$268K of giving in Nov/Dec to reach 2013 budget; 2012 Nov/Dec giving was \$247K

- Building Fund giving was also strong, and there are currently four months of mortgage payments in reserve (up from 3.8 months last month)
- Budget Process discussion; Brian will circulate templates to different committees for updates and anticipated changes; to be returned by December 3, so that they can be reviewed at the next committee meeting; Evangelism has already submitted their budget

#### **President's Report – John Urbanski**

- Nominating Committee will start work later this month
- "Luther's Way" content was due on Monday (11 Nov); January deadline is December 9
- Approximately 75 congregants attended on Sunday, Nov 3. A few changes will be made for the next meetings, including: nametags, make opening a little tighter to give more time for discussion, extend total time to 75 minutes (vs. 1 hour), combine questions 2 and 3 to allow more continuous discussion, handouts will be ready, we'll encourage people to sit with those they do not know, will meet in Fellowship Hall (vs. Luther Hall). Positive feedback shared by various council members; John suggested starting the December council meeting at 6:30 to allow additional time for discussion

#### **Council Reports:**

##### **Evangelism Committee – Mike Berdahl**

- Another ALPHA course is scheduled to start in March
- Logo clothing has had a bit of a delay due to not liking the initial embroidered logo sample; Todd M is following up directly with the clothing company and Pastor Paul; hoping to have clothing prior to Christmas
- Meet & Greet – discovered that no one is signing up because there was no sign-up option; Mike working to correct the issue
- Three Immanuel members attended the recent Via de Cristo; Sharon P shared her experience; next Via de Cristo is in January in Brooklyn Center; Immanuel will host in June 2014

##### **Adult Faith Formation – Lorraine Maenke**

- Lorraine met last night with a group interested in planning an empty nesters event, which has tentatively been set for January 18 at 7:00 at Tavern 4&5. This will be an initial kick-off for any empty nesters who are interested. They are hoping to hold 5 or 6 events a year
- Women's Group recently went to Elim during the afternoon to sing with the residents which was a very rewarding experience for both the participants and the residents

##### **Worship, Music and Arts – Janis Cameron**

- Thanksgiving eve service has been planned; Trinity Choir will sing; cornucopia will be set up
- Servant song is looking for a bass player
- Praise ringers may start playing along with hymns
- Looking at offering \$40 flower arrangements and if no one signs-up, we will not have flowers, but will have green plants. Janis is also following up with MaryKay to ensure that funds paid online for flowers are getting directed to WMA's flower account; garden committee will provide flowers again next summer
- The musical will be "Come to the Table"; auditions will be held in mid-December; with performance(s) in March – considering a Saturday evening and Sunday; budget is approximately \$3,000; youth will be encouraged to make short term commitment to the musical with the hope of some then becoming more interested in joining choir
- CREO liturgical dance performance will be held this Sunday, November 17, at 4 p.m.
- A question was asked about whether feedback had been received regarding the change in worship times; Pastor Paul reported that the 10:45 service has been well attended; council members discussed various pros/cons with the changed times.
- The old red sanctuary Bibles are available for donation – perhaps Camp Onomia? WMA is open to suggestions.

### **Properties – Brian Heinzen – via Bill Hawkins**

- Fall clean-up did not go as well as they had hoped; this year they tried varied schedules vs dedicated day for clean-up
- There are some lights out in Luther Hall; Bill will rent a lift so Jim can determine if there's an electrical problem
- Jim removed the old sound equipment from the storage room; looking to add shelving for fleece blanket supplies
- Daryl is cleaning carpets; there is more painting to be done near the kitchen
- Jim is getting snow blowers ready for winter
- Fire extinguishers are being serviced

### **Senior High and Middle School Youth – Brenda Tonjes and Kirsten Stenoien; Shannon Fleck**

- 7<sup>th</sup> graders will be serving pie following the Thanksgiving eve service
- Confirmation Retreat was great
- Youth Rejoice will be held during the morning on Sunday, January 19

### **Stewardship – Paul Stordahl**

- Sunday stewardship talks have been great so far
- Stewardship Sunday is this Sunday; Pastor Paul will follow-up with Ty re breakfast and will send out a reminder email/letter – focus on simply giving and taking the next step towards tithing

### **Children's Education – Eldri Johnson**

- Christmas program is scheduled for Sunday, December 15, during the 9:15 service
- Budget discussions are underway; committee is meeting tomorrow
- Starting to talk about VBS

### **Social Concerns – Sharon Peterson**

- Jan Marshke reported that 11 people have gone through Carver County Jail orientation
- Immanuel is going to focus on a different social/outreach ministry each month
- Kim Rathjen has coordinated various Christmas giving opportunities
- Discussed funds currently available in different accounts to assist with disaster relief in the Philippines; motion to contribute \$482 of council directed benevolence funds to Lutheran Disaster Relief; motion carried

### **Fellowship Committee – Terri Tomlinson, Kim Brattensborg**

- Smorgasbord tickets went on sale last Sunday and will be on sale for the next three Sundays
- Committee will provide refreshments for the Service of Remembrance on November 21.

### **Staff Reports:**

#### **Martin Rathjen - Absent**

- No report

#### **Bill Hawkins**

- See Properties Report above

#### **Pastor Susan**

- Scheduling issues with Group Spiritual Direction, but wanting to get started
- Service of Remembrance is Nov 21 at 7:00; David Holm will deliver the message
- GROW is going great.
- Thanksgiving interfaith service at Pax Christi on Nov 24<sup>th</sup> at 7:00.
- Sanctuary Sunday this Sunday; Tracy working to include kids in worship
- Advent Quiet - December 1 at 6:35 in Fellowship Hall

**Pastor Paul**

- Expressed thanks for Council's work on same gender marriage discussions.
- Staff retreat went well (day and one-half); focusing on vision statement and what that means for our mission statement, etc. Trying to articulate where the vision statement is calling the staff to go and serve. Four key components: (i) Service; (ii) Discipleship; (iii) Hospitality; (iv) Evangelism.
- Read "Missional Renaissance" as a staff and discussed again. How do we measure effectiveness within our culture and going out to meet people where they are at? Faith isn't just happening at church.
- End of this month will start the men's group for Pastor Paul's seminary study. Paul putting together the final pages of the dissertation. 25 men from Immanuel and 6 or 8 from Redeemer. Talking about what it means to be a man and a man of faith.

**Other Business**

- Next same gender listening session is November 14, 7 p.m.
- Next Council meeting is December 10 at **6:30 p.m.**

Meeting adjourned at 8:44 p.m.

Prayerfully submitted,

Susan Geitzenauer, Vice President / acting on behalf of Karen Travis, Council Secretary

**Attendance**

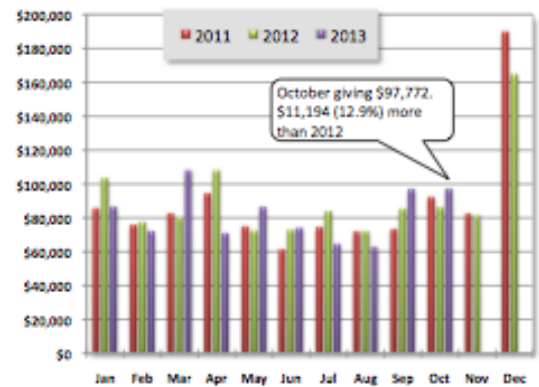
P-Present, NP-Not Present

<b>Name</b>	<b>P/NP</b>	<b>Name</b>	<b>P/NP</b>
Lisa Anderson	NP	Pastor Paul Nelson	P
Mike Berdahl	P	Brian Nichols	P
Kim Brattensborg	P	Sharon Peterson	P
Janis Cameron	P	Martin Rathjen	NP
Shannon Fleck	P	Kirsten Stenoien	P
Susan Geitzenauer	P	Paul Stordahl	P
Lynette Gust	NP	Terri Tomlinson	P
Bill Hawkins	P	Brenda Tonjes	P
Brian Heinzen	NP	Karen Travis	NP
Mary Hovet	NP	John Urbanski	P
Eldri Johnson	P	Bob Warner	P
Lorraine Maenke	P	Pastor Susan Weaver	P

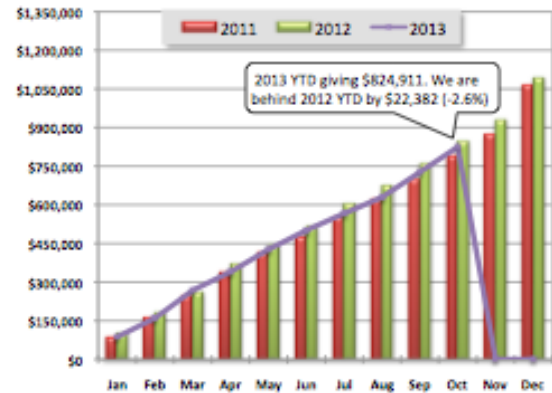
# Income Report

## Immanuel Lutheran Church Income Report for October 2013

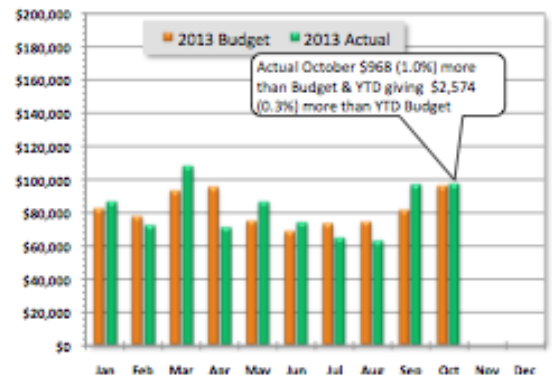
Month	Monthly Giving					
	2010	2011	2012	2013	Var \$	Var %
January	81,681	86,230	103,744	87,046	(16,698)	-16.1%
February	81,946	76,078	78,018	72,714	(5,304)	-6.8%
March	76,533	83,025	80,694	108,598	27,904	34.6%
April	82,488	94,959	108,798	71,449	(37,349)	-34.3%
May	84,582	75,593	73,058	86,953	13,895	19.0%
June	65,110	61,527	73,349	74,499	1,150	1.6%
July	69,531	74,684	84,562	65,157	(19,405)	-22.9%
August	82,890	72,215	72,617	63,296	(9,321)	-12.8%
September	73,435	73,812	85,876	97,427	11,551	13.5%
October	103,989	92,878	86,578	97,772	11,194	12.9%
November	80,006	82,900	82,074	0		
December	173,149	190,460	165,267	0		
YTD	1,064,363	1,094,635	1,172,653	824,911	(22,382)	-2.6%



Month	Cumulative Giving by Month					
	2010	2011	2012	2013	Var \$	Var %
January	81,681	86,230	103,744	87,046	(16,698)	-16.1%
February	163,627	162,308	181,762	159,760	(22,002)	-12.1%
March	240,160	245,333	262,456	268,358	5,902	2.2%
April	322,648	340,293	371,254	339,807	(31,447)	-8.5%
May	407,230	415,885	444,312	426,760	(17,552)	-4.0%
June	472,340	477,412	517,661	501,259	(16,402)	-3.2%
July	541,871	552,096	602,223	566,416	(35,807)	-5.9%
August	624,761	624,312	674,840	629,712	(45,128)	-6.7%
September	698,196	698,124	760,716	727,139	(33,577)	-4.4%
October	802,185	791,002	847,294	824,911	(22,382)	-2.6%
November	882,191	873,903	929,368			
December	1,055,340	1,064,363	1,094,635			



Month	2013 Monthly Budget vs. Actual					
	Budget	Actual	Mo Var	Mo %	YTD Var	YTD %
January	82,849	87,046	4,197	5.1%	4,197	5.1%
February	78,150	72,714	(5,436)	-7.0%	(1,239)	-0.8%
March	93,889	108,598	14,709	15.7%	13,470	5.3%
April	96,155	71,449	(24,706)	-25.7%	(11,236)	-3.2%
May	75,358	86,953	11,595	15.4%	359	0.1%
June	68,915	74,499	5,584	8.1%	5,943	1.2%
July	73,567	65,157	(8,410)	-11.4%	(2,467)	-0.4%
August	74,710	63,296	(11,414)	-15.3%	(13,881)	-2.2%
September	81,940	97,427	15,487	18.9%	1,606	0.2%
October	96,804	97,772	968	1.0%	2,574	0.3%
November						
December						
Annual	1,093,002	824,911	-- NA --	-- NA --	(268,091)	75.5%



# Financial Summary

## 2013 October Analysis Summary

October 2013 giving was more than October 2012 and more than October 2013 budget.

- Actual giving 2013 vs. 2012:
  - October giving: \$11,194 (12.9%) more than 2012 (\$97,772 vs. \$86,578)
  - YTD giving: \$22,382 (-2.6%) less than 2012 (\$824,911 vs. \$847,294)
- Actual giving vs. budget:
  - October: \$968 (1.0%) more than budget (\$97,772 vs. \$96,804)
  - YTD: \$2,574 (0.3%) more than budget (\$824,911 vs. \$822,337)
- Attendance: Sundays in October 2013: 4 2012: 4

### **Immanuel Attendance: 2012 vs. 2013**

Date	2011	2012	2013	2013 Cum	Variance	Cum Variance
January	3,054	2,784	2,139	2,139	(645)	(645)
February	2,300	3,146	3,309	5,448	163	(482)
March	3,793	3,553	5,149	10,597	1,596	1,114
April	4,616	4,415	2,210	12,807	(2,205)	(1,091)
May	2,417	1,948	2,106	14,913	158	(933)
June	1,595	1,724	1,575	16,488	(149)	(1,082)
July	1,772	1,782	1,435	17,923	(347)	(1,429)
August	1,493	1,544	1,469	19,392	(75)	(1,504)
September	2,495	2,957	2,516	21,908	(441)	(1,945)
October	3,483	2,670	2,651	24,559	(19)	(1,964)
November	3,343	3,111		24,559	(3,111)	(5,075)
December	4,208	5,000		24,559	(5,000)	(10,075)
YTD Avg	2,881	2,886	2,456			
YTD Total	34,569	34,634	24,559			

### **Immanuel Lutheran 3 Year Attendance Comparison**

