

**Immanuel Lutheran Church
Executive Committee Meeting Minutes
October 2, 2012**

Attendees: John Urbanski, Brian Nichols, Rick Harrison, Pastor Paul Nelson, Karen Travis, Lee Prinkkila.

Absent: Pastor Susan Weaver

John called the meeting to order at 6 p.m.

Devotion: Rick Harrison

Motions:

Motion Made	Made	Second	Outcome of Vote
Motioned to approve minutes from September	Lee P.	Brian N.	Motion carried
Motioned to approve \$300 in additional funding for the Eagle Scout landscaping project.	John U.	Rick H.	Motion carried

Action Items Assigned:

Action Items	Assigned To	Target Date	Status

Other Business

Benefits for Part-Time Custodian

- Rick looked into this and will follow up with Bill for more information. There is a two-month probationary period, after which insurance is available through ELCA (details of this are not clear). A suggestion was made to look into bringing him into the benefit plan other Immanuel staff members are on. A suggestion was made to see if Darrell could add responsibility for cleaning the kitchen as part of his regular duties.

Reports:

Secretary's Report – Karen Travis

- Lee motioned to approve September meeting notes. Brian seconded. Motion carried.

Treasurer's Report – Brian Nichols

- Brian to check on budgeting process.
- Discussed the possibility of a potential surplus and how we might approach this. A suggestion was made to build in a capital budget, as well as to separate out Communication as its own budget (currently part of Facilities and Evangelism).
- The Eagle Scout project is likely to need another \$300 (total of \$800) for the landscaping project. This would be considered a capital improvement, so could come out of the Properties budget. John motioned to approve additional funding of \$300 for the Eagle Scout landscaping project. Brian seconded. Motion carried.

Financial Secretary's Report – Rick Harrison

- No counters on September 30. Final numbers will be available next week.
- Sunday totals (5 Sundays) were close to \$70,000, plus approximately \$20,000 from Simply Giving. Budget is \$81,000.

Vice President's Report – Lee Prinkkila

- Kitchen Lady Law: Lee has drafted a policy for Immanuel. Discussed a number of areas where improvement is needed and the challenges of complying with procedures as a mid-sized church. Agreed to begin by focusing on educating those leading Fellowship, GROW, and funeral activities to ensure a safer kitchen environment. With these continuing efforts, we should be on the right track in complying with this law.

Pastor Updates:

Pastor Susan

- Not present. No report.

Pastor Paul

- There will be a meeting on Thursday night providing the first report on faith-to-faith conversations. Discussed how these conversations are helping people see the congregation and community in a new way. Immanuel is working with other organizations that have undergone similar efforts (e.g., Vibrant Faith). A summary of these presentations will be shared at the annual meeting.
- Community Listening Forum: This will be held on Sunday from 4 to 6 p.m. So far 75 people have confirmed they will be there, along with eight political candidates. Goals are to build relationships in the community, overcome divisions, and raise-up the needs we've heard in our faith-to-faith conversations (e.g., transportation, home foreclosures). A suggestion was made to start the meeting by saying the Pledge of Allegiance.
- Darrell is doing a great job. May want to increase his hours temporarily to do some additional maintenance projects (e.g., landscaping). Pastor Paul to look into this.

President Items:

- John handed out an updated Facility Use Policy and explained the revisions that were made. A question was raised about how people would know when they are in conflict with the terms of Immanuel's insurance coverage. Need to ask our insurance broker about this. John to check with Bill on this. Need to add a date to the document.
- Next month's Executive Committee meeting is scheduled for election night. The group agreed to keep this meeting on the schedule.

Next Meetings:

- Next Church Council meeting will be October 9, 2012, at 7 p.m.
- Next Executive Council meeting will be November 6, 2012, at 6:00 p.m.

Meeting adjourned at 7:10 p.m.

Prayerfully submitted,
Karen Travis
Church Council Secretary

Income Summary

September Income Analysis Summary

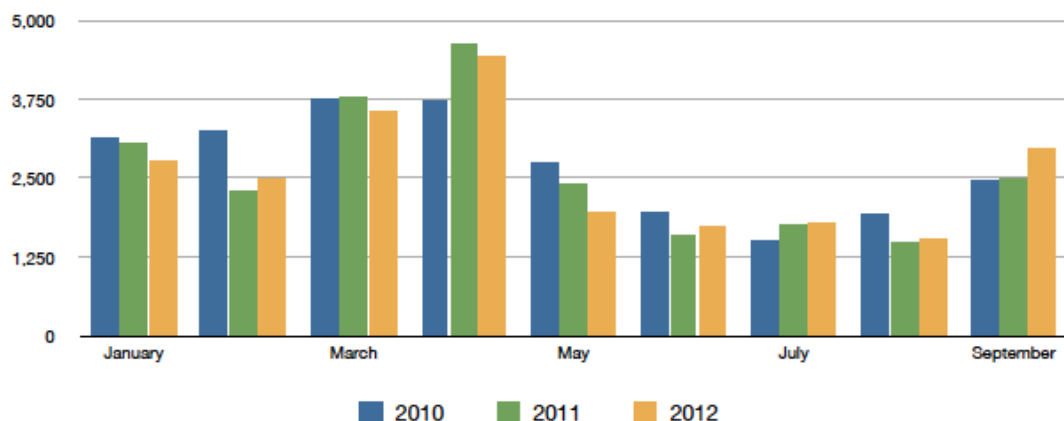
September 2012 giving was more than September 2011 and more than September 2012 budget.

- Actual giving 2012 vs 2011:
 - September giving: \$12,063 (16.3%) more than 2011 (\$85,876 vs \$73,812)
 - YTD giving: \$62,591 (9.0%) more than 2011 (\$760,716 vs \$698,124)
- Actual giving vs budget:
 - September: \$85,876 (6.2%) more than budget (\$85,876 vs \$80,875)
 - YTD: \$49,169 (6.9%) more than budget (\$760,716 vs \$711,547)
- Completed 75% of 2012 budget year with total giving at 71% of budget.
- Attendance:
 - Sundays in September 2012: 5 (YTD 40) 2011: 4 (YTD 39)

Immanuel Attendance: 2011 vs. 2012

Date	2010	2011	2012	2012 Cum	Variance	Cum Variance
January	3,151	3,054	2,784	2,784	(270)	(270)
February	3,254	2,300	2,502	5,286	202	(68)
March	3,764	3,793	3,553	8,839	(240)	(308)
April	3,722	4,616	4,415	13,254	(201)	(509)
May	2,757	2,417	1,948	15,202	(469)	(978)
June	1,957	1,595	1,724	16,926	129	(849)
July	1,505	1,772	1,782	18,708	10	(839)
August	1,938	1,493	1,544	20,252	51	(788)
September	2,472	2,495	2,957	23,209	462	(326)
YTD Avg	2,653	2,555	2,522			

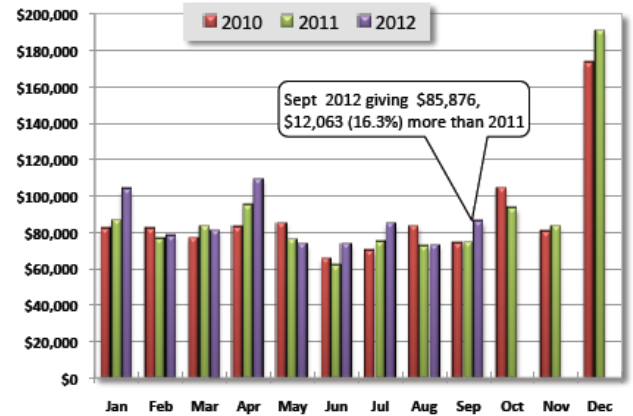
Immanuel Lutheran 3 Year Attendance Comparison



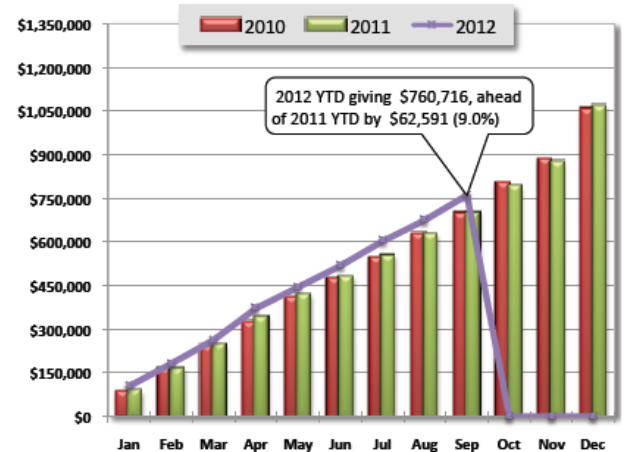
Income Report

Immanuel Lutheran Church Income Report for September 2012

Monthly Giving						
Month	2009	2010	2011	2012	Var \$	Var %
January	69,088	81,681	86,230	103,744	17,514	20.3%
February	62,631	81,946	76,078	78,018	1,940	2.5%
March	102,801	76,533	83,025	80,694	(2,331)	-2.8%
April	96,532	82,488	94,959	108,798	13,839	14.6%
May	77,469	84,582	75,593	73,058	(2,535)	-3.4%
June	65,109	65,110	61,527	73,349	11,822	19.2%
July	62,889	69,531	74,684	84,562	9,878	13.2%
August	82,315	82,890	72,215	72,617	402	0.6%
September	73,270	73,435	73,812	85,876	12,063	16.3%
October	76,167	103,989	92,878			
November	101,925	80,006	82,900			
December	171,577	173,149	190,460			
YTD	1,041,772	1,055,340	1,064,363	760,716	62,591	9.0%



Cumulative Giving by Month						
Month	2009	2010	2011	2012	Var \$	Var %
January	69,088	81,681	86,230	103,744	17,514	20.3%
February	131,718	163,627	162,308	181,762	19,453	12.0%
March	234,520	240,160	245,333	262,456	17,122	7.0%
April	331,052	322,648	340,293	371,254	30,961	9.1%
May	408,521	407,230	415,885	444,312	28,427	6.8%
June	473,630	472,340	477,412	517,661	40,249	8.4%
July	536,519	541,871	552,096	602,223	50,127	9.1%
August	618,834	624,761	624,312	674,840	50,528	8.1%
September	692,104	698,196	698,124	760,716	62,591	9.0%
October	768,271	802,185	791,002			
November	870,195	882,191	873,903			
December	1,041,772	1,055,340	1,064,363			



2012 Monthly Budget vs. Actual						
Month	Budget	Actual	Mo Var	Mo %	YTD Var	YTD %
January	81,485	103,744	22,259	27.3%	22,259	27.3%
February	76,681	78,018	1,337	1.7%	23,596	14.9%
March	93,918	80,694	(13,224)	-14.1%	10,372	4.1%
April	92,580	108,798	16,218	17.5%	26,590	7.7%
May	74,121	73,058	(1,063)	-1.4%	25,527	6.1%
June	67,973	73,349	5,376	7.9%	30,903	6.3%
July	69,966	84,562	14,596	20.9%	45,499	8.2%
August	73,948	72,617	(1,331)	-1.8%	44,168	7.0%
September	80,875	85,876	5,001	6.2%	49,169	6.9%
October	96,878					
November	91,309					
December	175,266					
Annual	1,075,000	760,716	-- NA --	-- NA --	(314,284)	70.8%

