

**Immanuel Lutheran Church
Executive Committee Meeting Minutes
December 2, 2013
6 p.m., ILC Library**

Attendees: John Urbanski, Pastor Paul Nelson, Pastor Susan Weaver, Brian Nichols, and Karen Travis

Absent: Susan Geitzenauer and Bob Warner

John called the meeting to order at 5:59 p.m.

Devotion provided by John Urbanski

Motions:

Motions Made	Made by	Second	Outcome of Vote
Motion to approve minutes from November	John U.	Brian N.	Motion carried

Action Items Assigned:

Action Items	Assigned	Target Date	Status

Other Business:

Same gender marriage:

- Council will be meeting a half-hour early next week. Would like each member to share briefly what he or she heard. Discussed concerns that we listen respectfully to each other as part of the process—nothing has been decided. We are taking the input we've received seriously. Council will determine through discussion next week how best to proceed on the determination of whether or not these ceremonies can take place in the Sanctuary.
- A question was raised in Caring Conversations about whether our pastors can conduct ceremonies in other locations (off church property). We will be discussing this during the Council meeting next week.

Reports:

Secretary's Report – Karen Travis

- John motioned to approve November minutes, as written. Brian Nichols seconded. Motion carried.

Financial Secretary's Report – Bob Warner

- No report.

Treasurer's Report – Brian Nichols

- November YTD giving is slightly less than a year ago, and net expenses were slightly higher. Assuming December is similar to last year, we should come in at budget.

Vice President's Report – Susan Geitzenauer

- No report.

President's Report – John Urbanski

- Discussed open Council positions that will need to be filled.
- Approved recessional offering going toward Youth scholarships for Youth Rejoice!
- Discussed Thrivent Choice dollars and confirmed that the Thrivent choice dollars will be entered to the general income line. Then, those that use the funds need to be in contact with the committee they are part of to make sure their project/event gets in the budget.

Pastor updates:

Pastor Paul

- Tonight is the last men's group gathering at Pastor Paul's home for faith discussion.
- Pastor Paul continues to work on his dissertation.
- Vibrant Faith update: Starting pastoral care-model ministry with staff, touching base with them about how God is working through them and encouraging them to have these conversations with others with whom they work.

Pastor Susan

- Working with staff and church leaders to explore what a mature faith looks like.
- Grateful to Kim Rathjen for collecting input from those who serve about their experience and stories of how God is working in their lives.

Upcoming meetings:

Council: December 10 at 6:30 p.m.

Executive Committee: January 7 at 6 p.m.

Meeting adjourned at 7:03 p.m.

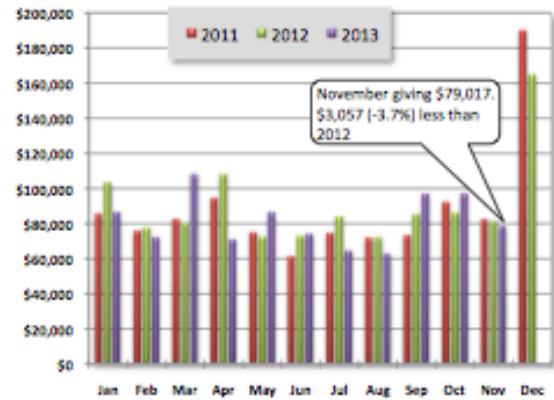
Prayerfully submitted,

Karen Travis
Church Council Secretary

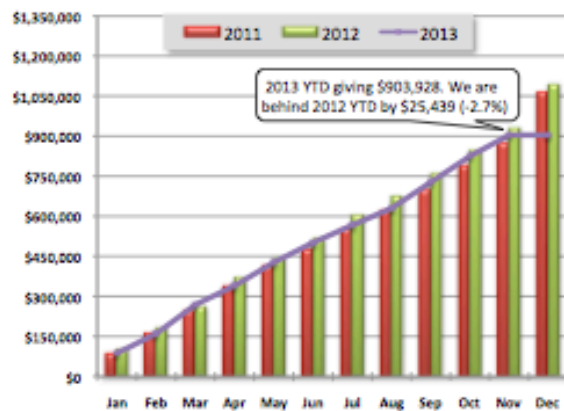
Income Report

Immanuel Lutheran Church Income Report for November 2013

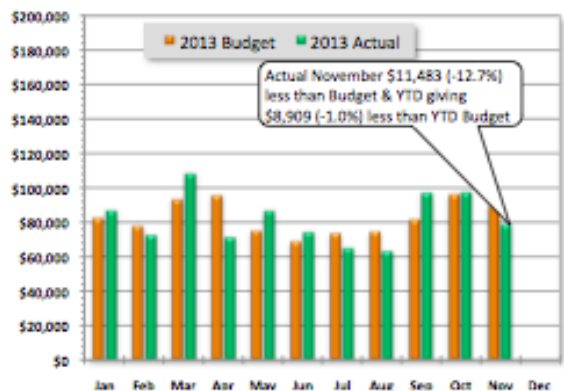
Monthly Giving						
Month	2010	2011	2012	2013	Var \$	Var %
January	81,681	86,230	103,744	87,046	(16,698)	-16.1%
February	81,946	76,078	78,018	72,714	(5,304)	-6.8%
March	76,533	83,025	80,694	108,598	27,904	34.6%
April	82,488	94,959	108,798	71,449	(37,349)	-34.3%
May	84,582	75,593	73,058	86,953	13,895	19.0%
June	65,110	61,527	73,349	74,499	1,150	1.6%
July	69,531	74,684	84,562	65,157	(19,405)	-22.9%
August	82,890	72,215	72,617	63,296	(9,321)	-12.8%
September	73,435	73,812	85,876	97,427	11,551	13.5%
October	103,989	92,878	86,578	97,772	11,194	12.9%
November	80,006	82,900	82,074	79,017	(3,057)	-3.7%
December	173,149	190,460	165,267	0		
YTD	1,064,363	1,094,635	1,172,653	903,928	(25,439)	-2.7%



Cumulative Giving by Month						
Month	2010	2011	2012	2013	Var \$	Var %
January	81,681	86,230	103,744	87,046	(16,698)	-16.1%
February	163,627	162,308	181,762	159,760	(22,002)	-12.1%
March	240,160	245,333	262,456	268,358	5,902	2.2%
April	322,648	340,293	371,254	339,807	(31,447)	-8.5%
May	407,230	415,885	444,312	426,760	(17,552)	-4.0%
June	472,340	477,412	517,661	501,259	(16,402)	-3.2%
July	541,871	552,096	602,223	566,416	(35,807)	-5.9%
August	624,761	624,312	674,840	629,712	(45,128)	-6.7%
September	698,196	698,124	760,716	727,139	(33,577)	-4.4%
October	802,185	791,002	847,294	824,911	(22,382)	-2.6%
November	882,191	873,903	929,368	903,928	(25,439)	-2.7%
December	1,055,340	1,064,363	1,094,635	903,928	(190,706)	-17.4%



2013 Monthly Budget vs. Actual						
Month	Budget	Actual	Mo Var	Mo %	YTD Var	YTD %
January	82,849	87,046	4,197	5.1%	4,197	5.1%
February	78,150	72,714	(5,436)	-7.0%	(1,239)	-0.8%
March	93,889	108,598	14,709	15.7%	13,470	5.3%
April	96,155	71,449	(24,706)	-25.7%	(11,236)	-3.2%
May	75,358	86,953	11,595	15.4%	359	0.1%
June	68,915	74,499	5,584	8.1%	5,943	1.2%
July	73,567	65,157	(8,410)	-11.4%	(2,467)	-0.4%
August	74,710	63,296	(11,414)	-15.3%	(13,881)	-2.2%
September	81,940	97,427	15,487	18.9%	1,606	0.2%
October	96,804	97,772	968	1.0%	2,574	0.3%
November	90,500	79,017	(11,483)	-12.7%	(8,909)	-1.0%
December						
Annual	1,093,002	903,928	-- NA --	-- NA --	(189,074)	82.7%



Financial Summary

2013 November Analysis Summary

November 2013 giving was more than less than 2012 and less than October 2013 budget.

- Actual giving 2013 vs. 2012:
 - November giving: \$3,057 (-3.7%) less than 2012 (\$79,017 vs. \$82,074)
 - YTD giving: \$25,439 (-2.7%) less than 2012 (\$903,928 vs. \$929,368)
- Actual giving vs. budget:
 - November: \$11,483 (-12.7%) less than budget (\$79,017 vs. \$90,500)
 - YTD: \$8,909 (1.0%) less than budget (\$903,928 vs. \$912,837)
- Attendance: Sundays in October 2013: 5 2012: 5

Immanuel Attendance: 2012 vs. 2013

Date	2011	2012	2013	2013 Cum	Variance	Cum Variance
January	3,054	2,784	2,139	2,139	(645)	(645)
February	2,300	3,146	3,309	5,448	163	(482)
March	3,793	3,553	5,149	10,597	1,596	1,114
April	4,616	4,415	2,210	12,807	(2,205)	(1,091)
May	2,417	1,948	2,106	14,913	158	(933)
June	1,595	1,724	1,575	16,488	(149)	(1,082)
July	1,772	1,782	1,435	17,923	(347)	(1,429)
August	1,493	1,544	1,469	19,392	(75)	(1,504)
September	2,495	2,957	2,516	21,908	(441)	(1,945)
October	3,483	2,870	2,851	24,559	(19)	(1,964)
November	3,343	3,111	3,048	27,607	(63)	(2,027)
December	4,208	5,000		27,607	(5,000)	(7,027)
YTD Avg	2,881	2,888	2,510			
YTD Total	34,569	34,634	27,607			

Immanuel Lutheran 3 Year Attendance Comparison

