

Immanuel Lutheran Church
Church Council Meeting Minutes
November 13, 2012
7 p.m., ILC Library

John Urbanski called the meeting to order at 7:08 p.m.

Devotions – John Urbanski

Caring Conversations (All)

Refreshments – Mary Hovet

Faith Story – Pastor Susan

Motions:

Motion Made	Made By	Second	Outcome of Vote
Motion to approve October minutes	Lee P.	Sharon P.	Motion carried
Motion to approve proposed Facility Use Policy	Lee P.	Mike B.	Motion carried

Action Items Assigned:

Action items	Assigned to	Target Date	Status

Listening Session

- Discussed concerns raised at the last meeting regarding materials that were displayed at the event. John thanked Council for their input and confirmed Immanuel has not signed on as a Prophetic Voices congregation. He asked each Council member to continue to speak up as the voice of the congregation to advocate in their best interest.

Facility Use Policy

- Reviewed proposed Facility Use Policy and Criteria. Lee motioned to approve. Mike seconded. Motion carried. Policy will be posted to Immanuel’s website.

Benefit Policy for Employees

- Discussed efforts under way to set a policy going forward in a consistent and fair way, regarding employee benefits.
- Executive Committee is still reviewing a draft policy, and hopes to have this defined in time for the budget process.

Committee Reports:

Secretary's Report – Karen Travis

- Lee motioned to approve October minutes. Sharon seconded. Motion carried.

Financial Secretary's report – Rick Harrison (reported by Bill)

- Our financial position continues to be very strong. We are \$10,000 under budget, but YTD giving is over by \$40,000.
- Projections indicate 25% of income will come in the next two months. Based on last year's giving, we are on target to meet our budget for 2012.

Treasurer's report – Brian Nichols (reported by John)

- Brian is sending out materials to committees to be used in planning for next year. Discussed what we might do with funds if we are blessed with a surplus (e.g., contingency fund?). Brian will make recommendations regarding this.

Vice President's Report – Lee Prinkkila

- There will be one more meeting of the Church Lady Law after the Smorgasbord.
- Thrivent changed their policy regarding matching funds. They now have Thrivent Choice dollars, which can be donated at the direction of Thrivent members. As a result, matching dollars are part of the general fund (already integrated into budgets), so groups can no longer apply to receive matching dollars. A suggestion was made to define within Immanuel how the Thrivent Choice dollars are being used. So far this year, Immanuel has received \$5,300 in Thrivent Choice dollars.

Evangelism Committee – Mike Berdahl

- Postponed Immanuel's clothing sale until the new logo is developed.
- Working with Martin on additional funds needed for Communications (e.g., redesign the website with new branding).
- Work is under way to plan for Alpha on January 10. There will be a meeting next Tuesday night to get things pulled together. The program lasts 10 weeks. Could touch base with Adult Faith Formation on this. More information will be featured in the in December's "Luther's Way."

Adult Faith Formation – Lorraine Maenke

- October 15, Woman's Ministry event on prayer.
- A January Wine Tasting event is being organized.
- Bible Study attendance has been very good.
- Adult Bible Study is using a DVD on Revelations (great resource).
- Connections group had a movie event a couple weeks ago.
- Young Marrieds event February 9 from 5-7 p.m. to provide fellowship. Free event.

Worship, Music and Arts – Chip Carlson (reported by John)

- Altar guild met recently to prepare their schedule and identify tasks through December.
- Children's choirs doing well with good participation.
- Ascension choir preparing for bake sale December 1st and 2nd. This is the fundraiser that funds their annual trip to Duluth.
- All choirs and musical ensembles are busy preparing music for Christmas.
- Instrumental ensembles are picking up new members. We have a new church member who is planning to organize a woodwind ensemble.
- Studying the possible addition of video projectors to worship late in 2013. Currently investigating costs, funding sources, and appropriate usage. Both the Properties Committee and Communications Team will need to be involved. Need a policy on how it will be used (e.g., recording and broadcasting services, to reach those in rural areas who can't get to a church or don't have a church available to them).

Properties – John Melchert and Brian Heinzen

- Looking at getting storage (e.g., building a garage). Space is available on the west side of the property for a two-stall garage (\$8,000 to \$10,000).
- The stained glass window is finished and it is at the church. John will work to get this installed.
- Waiting for a final bid on electronic doors.

Senior High and Middle School Youth – Amy Manicor and Vickie Olson; Shannon Fleck and Mary Hovet

- Confirmation retreat was a great success.
- Meeting for the Mission Trip on November 14.
- Junior Milestone event with Thrivent (college information).
- Working on care packages for college students.
- Biaggi's fundraiser raised a couple hundred dollars for youth.
- Lock-in for middle school—50 kids came (fewer than previous years).
- Good turnout at St. Andrews for homecoming dance for middle school kids.
- Volunteer Opportunity: Tying blankets for seniors.
- Youth Quake
- Toys for Tots will be December 14.

Stewardship – Paul Stordahl (reported by John)

- Breakfast from 9-11 Sunday.

Children's Education – Lisa Anderson and Eldri Johnson

- Sunday, November 4, Families First had a service fair to make pillows for Sharing and Caring Hands, along with other craft items for Castle Ridge, boxes for Operation Christmas Child, breakfasts for Ronald McDonald families, sandwiches for the Sandwich project, etc.
- Fourth Graders finished their Stepping Stone.
- December 1 is Parent's Night Out. Looking for volunteers to staff this (good opportunity for Council members to meet new members).
- Ascension Bake Sale donations are due.
- December 16, Everybody Worship Sunday (there will be no kids program at 11 a.m.).

Social Concerns – Sharon Peterson

- Perfect Gift Program is being set up, including various organizations. On December 1st-2nd. Sign-up at registration desk for those people want to sponsor.
- PROP Christmas program is under way.
- Paul Erdman asked for help with Fair Trade Christmas Store—a table will be set up on November 24-25, November 28, December 5, and December 8-9.
- Social Concerns committee may also help with the Youth Garage Sale in May; figuring out how to get the whole congregation involved.
- Voted to take \$1,000 out of Social Ministry to go to the Hurricane Sandy ministry fund.
- Next meeting will be November 22.

Fellowship Committee – Lindy Fischer and Terri Tomlinson

- Service of Remembrance is Thursday.
- Smorgasbord planning is under way. Tickets will be available next Sunday.

Staff Reports:

Martin Rathjen

- Immanuel has had a number of people step forward to donate graphic design time/services, including redesigning Immanuel's logo to help communicate our vision.
- Youth ministry retreat was very successful.

Bill Hawkins

- Bill asked Council members to check their mailboxes and submit all check requests promptly.

Pastor Susan

- Southwest Grief Coalition is meeting at Immanuel three more times (Mondays). It's a bigger group than usual. Every week volunteers serve a meal at this event.
- Service of Remembrance Thursday night at 7 p.m.
- November 25 will be decorating the church for Christmas from 3-5 p.m. All are invited to help.

Pastor Paul

- Thanksgiving service next Wednesday.
- Grateful to the work of Stewardship Committee. Pledge cards are being received.
- Visioning Process:
 - Shared demographics of participants in faith-to-faith conversations. Shared a synopsis of what we heard in these conversations.
 - Encouraged Council members to join another meeting Wednesday night.
 - Suggestion was made to hold a meeting on a Sunday for those unable to join on Wednesday nights. Martin also suggested sharing a synopsis online.

President's Update – John Urbanski

- "Luther's Way" articles are due December 1 for January 2013.
- Nominating Committee will be meeting soon to look at filling positions for this group and other positions at the annual meeting.
- Annual reports will be due the first week of January 2013. Annual meeting is scheduled for January 27.

Other Business:

The next meeting will be December 11, 2012, at 7 p.m.

Meeting adjourned at 9:07 p.m.

Prayerfully submitted,
Karen Travis
Council Secretary

Attendance

P-Present, NP-Not Present

Name	P/NP	Name	P/NP
Lisa Anderson	P	Lorraine Maenke	P
Mike Berdahl	P	Brian Nichols	NP
Chip Carlson	NP	Pastor Paul Nelson	P
Lindy Fischer	P	Vicki Olson	P
Shannon Fleck	NP	Sharon Peterson	P
Rick Harrison	NP	Lee Prinkkila	P
Bill Hawkins	P	Martin Rathjen	P
Brian Heinzen	NP	Paul Stordahl	NP
Mary Hovet	P	Terry Tomlinson	NP
Eldri Johnson	P	Karen Travis	P
John Melchert	NP	John Urbanski	P
Amy Manicor	P	Pastor Susan Weaver	P

Income Summary

2012 October Analysis Summary

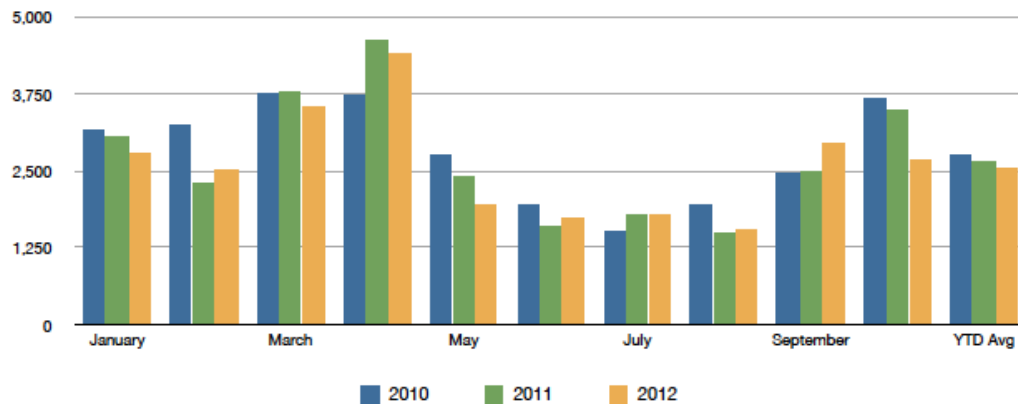
October 2012 giving was less than October 2011 and less than October 2012 budget.

- Actual giving 2012 vs 2011:
 - October giving: \$6,300 (6.3%) less than 2011 (\$86,578 vs \$92,878)
 - YTD giving: \$56,291 (7.1%) more than 2011 (\$847,294 vs \$791,002)
- Actual giving vs budget:
 - October: \$86,578 (10.6%) less than budget (\$86,578 vs \$96,878)
 - YTD: \$38,869 (4.8%) more than budget (\$847,294 vs \$808,425)
- Completed 83% of 2012 budget year with total giving at 79% of budget.
- Attendance:
 - Sundays in October 2012: 4 (YTD 44) 2011: 5 (YTD 44)

Immanuel Attendance: 2011 vs. 2012

Date	2010	2011	2012	2012 Cum	Variance	Cum Variance
January	3,151	3,054	2,784	2,784	(270)	(270)
February	3,254	2,300	2,502	5,286	202	(68)
March	3,764	3,793	3,553	8,839	(240)	(308)
April	3,722	4,616	4,415	13,254	(201)	(509)
May	2,757	2,417	1,948	15,202	(469)	(978)
June	1,957	1,595	1,724	16,926	129	(849)
July	1,505	1,772	1,782	18,708	10	(839)
August	1,938	1,493	1,544	20,252	51	(788)
September	2,472	2,495	2,957	23,209	462	(326)
October	3,670	3,483	2,670	25,879	(813)	(1,139)
YTD Avg	2,745	2,639	2,536			

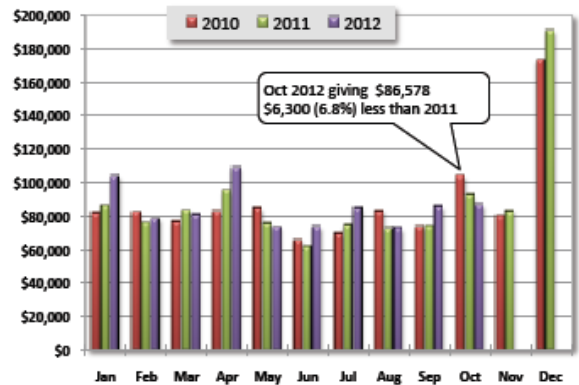
Immanuel Lutheran 3 Year Attendance Comparison



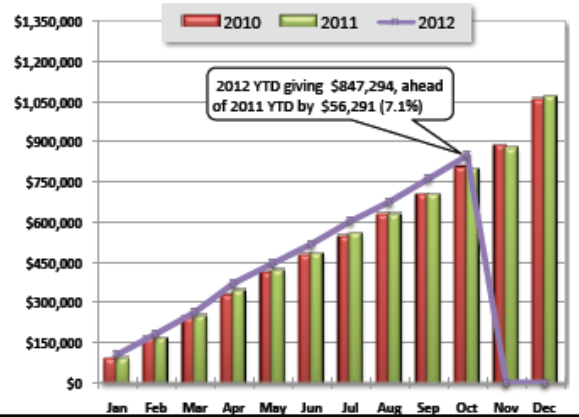
Income Report

Immanuel Lutheran Church Income Report for October 2012

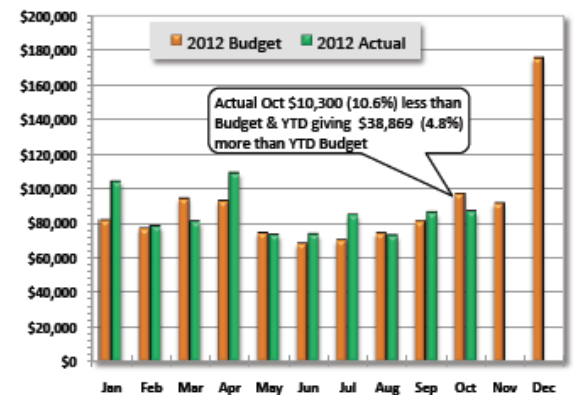
Monthly Giving						
Month	2009	2010	2011	2012	Var \$	Var %
January	69,088	81,681	86,230	103,744	17,514	20.3%
February	62,631	81,946	76,078	78,018	1,940	2.5%
March	102,801	76,533	83,025	80,694	(2,331)	-2.8%
April	96,532	82,488	94,959	108,798	13,839	14.6%
May	77,469	84,582	75,593	73,058	(2,535)	-3.4%
June	65,109	65,110	61,527	73,349	11,822	19.2%
July	62,889	69,531	74,684	84,562	9,878	13.2%
August	82,315	82,890	72,215	72,617	402	0.6%
September	73,270	73,435	73,812	85,876	12,063	16.3%
October	76,167	103,989	92,878	86,578	(6,300)	-6.8%
November	101,925	80,006	82,900			
December	171,577	173,149	190,460			
YTD	1,041,772	1,055,340	1,064,363	847,294	56,291	7.1%



Cumulative Giving by Month						
Month	2009	2010	2011	2012	Var \$	Var %
January	69,088	81,681	86,230	103,744	17,514	20.3%
February	131,718	163,627	162,308	181,762	19,453	12.0%
March	234,520	240,160	245,333	262,456	17,122	7.0%
April	331,052	322,648	340,293	371,254	30,961	9.1%
May	408,521	407,230	415,885	444,312	28,427	6.8%
June	473,630	472,340	477,412	517,661	40,249	8.4%
July	536,519	541,871	552,096	602,223	50,127	9.1%
August	618,834	624,761	624,312	674,840	50,528	8.1%
September	692,104	698,196	698,124	760,716	62,591	9.0%
October	768,271	802,185	791,002	847,294	56,291	7.1%
November	870,195	882,191	873,903			
December	1,041,772	1,055,340	1,064,363			



2012 Monthly Budget vs. Actual						
Month	Budget	Actual	Mo Var	Mo %	YTD Var	YTD %
January	81,485	103,744	22,259	27.3%	22,259	27.3%
February	76,681	78,018	1,337	1.7%	23,596	14.9%
March	93,918	80,694	(13,224)	-14.1%	10,372	4.1%
April	92,580	108,798	16,218	17.5%	26,590	7.7%
May	74,121	73,058	(1,063)	-1.4%	25,527	6.1%
June	67,973	73,349	5,376	7.9%	30,903	6.3%
July	69,966	84,562	14,596	20.9%	45,499	8.2%
August	73,948	72,617	(1,331)	-1.8%	44,168	7.0%
September	80,875	85,876	5,001	6.2%	49,169	6.9%
October	96,878	86,578	(10,300)	-10.6%	38,869	4.8%
November	91,309					
December	175,266					
Annual	1,075,000	847,294	-- NA --	-- NA --	(227,706)	78.8%



Communications Report

Audience Overview

Oct 27, 2012 - Nov 26, 2012

Advanced Segments | Email | Export | Add to Dashboard | Shortcut **BETA**

● % of visits: 100.00%

Overview

Visits vs. Select a metric

Hourly | Day | Week | Month



1,531 people visited this site

- Visits: 2,867
- Unique Visitors: 1,531
- Pageviews: 11,608
- Pages / Visit: 4.05
- Avg. Visit Duration: 00:03:37
- Bounce Rate: 46.08%
- % New Visits: 37.04%

